

Compact Hydraulic Cylinder



Forming Tomorrow. Today!

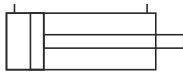


Features

- Designed suit to die casting.
- PTFE seals and bearing strips ensure perfect sealing and smooth movement.
- Stroke length offered up to 50 mm.
- Non cushion as a standard feature.
- Working pressure up to 140 bar.
- Viton seal as a standard feature.
- Piston rod is available with male; female thread & coupler type version.
- Construction : Compact Steel Body with ID ground and hard chrome plated.
- Piston rod : EN-8 hard chrome plated.

Available Types

Non Cushion



Specifications

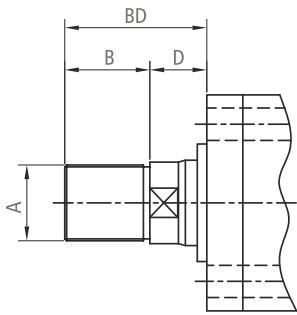
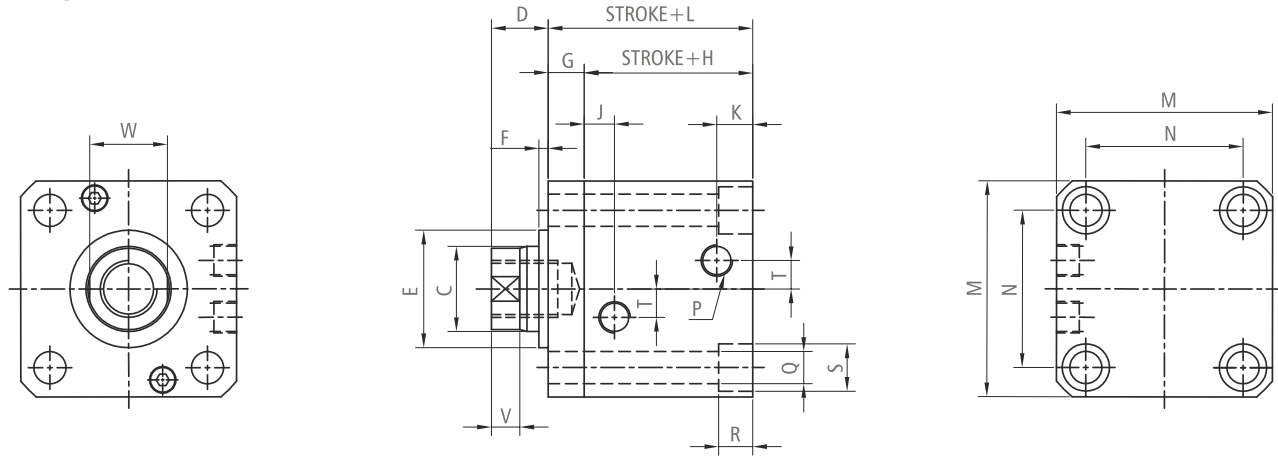
Bore	50, 63, 70, 80, 100mm
Medium	Mineral Oil / Water-Glycol fluid
Design	Piston cylinder non-cushion version
Pressure range	Up to 140 Bar
Temperature range	Up to 150°C with viton seals
Material	Body: Steel; Piston rod : En-8 hard chrome plated, Piston: Steel, Seals : PTFE, VITON

Ordering code example

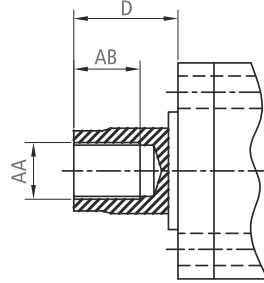
FHC	C	A	K	4	080	G	025	S	X	P
C Series	Pressure	A 140 Bar	Mountings	Cushion	Bore Size	Ram Size	Stroke	Type 1	Type 2	Type 3
			K Thru counter holes in cylinder body	4 Non	50 63 70 80 100	A 18 E 36 B 22 F 40 C 28 G 45 D 32		S Male thread N Coupler type F Female thread	X PTFE+Viton seal	P BSP thread T BSPT thread 9 Rod extension 0 Special feature

- Custom made hydraulic cylinder can be made on request.

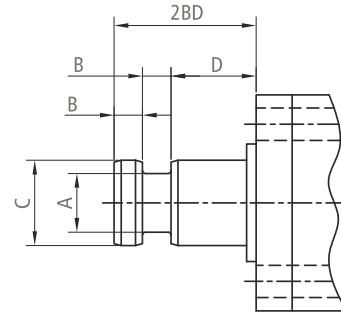
Dimensions



Male Thread



Female Thread



Coupler Type

* Pressurization when the cylinder is used as a single item is extremely dangerous because the retainer is held in place only by a temporary joint.

When pressurizing in order to operate the cylinder, please ensure that the retainer is in close contact with the mold that it is kept perfectly in place on the mold by a bolt.

* The stroke is max. 50mm. Note that, in case of stroke above 50mm please consult our sales representative.

CYL. BORE	ROD Ø C	FEMALE THREAD			MALE THREAD				COUPLER TYPE				E Ø	F	G	H	J	K
		AA THDS.	AB	D	AA THDS.	B	D	BD	A Ø	B	D	2BD						
50	28	M20x2.5P	25	25	M24x1.5P	32	30	62	20	12.5	35	60	43	5	13	42	14	13
63	36	M27x3P	35	25	M30x1.5P	36	30	66	25	15	40	70	52	5	15	47	15.5	14
70	40	M27x3P	35	25	M36x1.5P	40	35	75	28	15	15	75	58	5	17	49	14	16
80	45	M30x3.5P	35	30	M40x1.5P	45	35	80	31	15	45	75	62	5	19	54	15.0	17
100	45	M30x3.5P	35	45	M40x1.5P	45	35	80	31	15	45	75	62	5	35	85	22.5	26

CYL. BORE	L	M	N	P THDS.	Q	R	S	T	V	W
50	55	80	56	1/4"BSP	11	14	18	10	10	24
63	62	94	67	1/4"BSP	14	17	20	12	10	30
70	66	100	74	1/4"BSP	16	16	23	12	10	35
80	73	114	83	3/8"BSP	16	18	23	15	10	40
100	120	136	100	3/8"BSP	20	19	29	XX	15	40

Electropneumatics & Hydraulics (India) Pvt. Ltd.

Gat No. 254/255, Kharabe Wadi, Chakan-Talegaon Road, Chakan, Pune 410501, India.

Tel. : +91 2135 667500
Fax. : +91 2135 667502

www.electropneumatics.com

To find out how we can help you, email us at pneumatics@electropneumatics.com