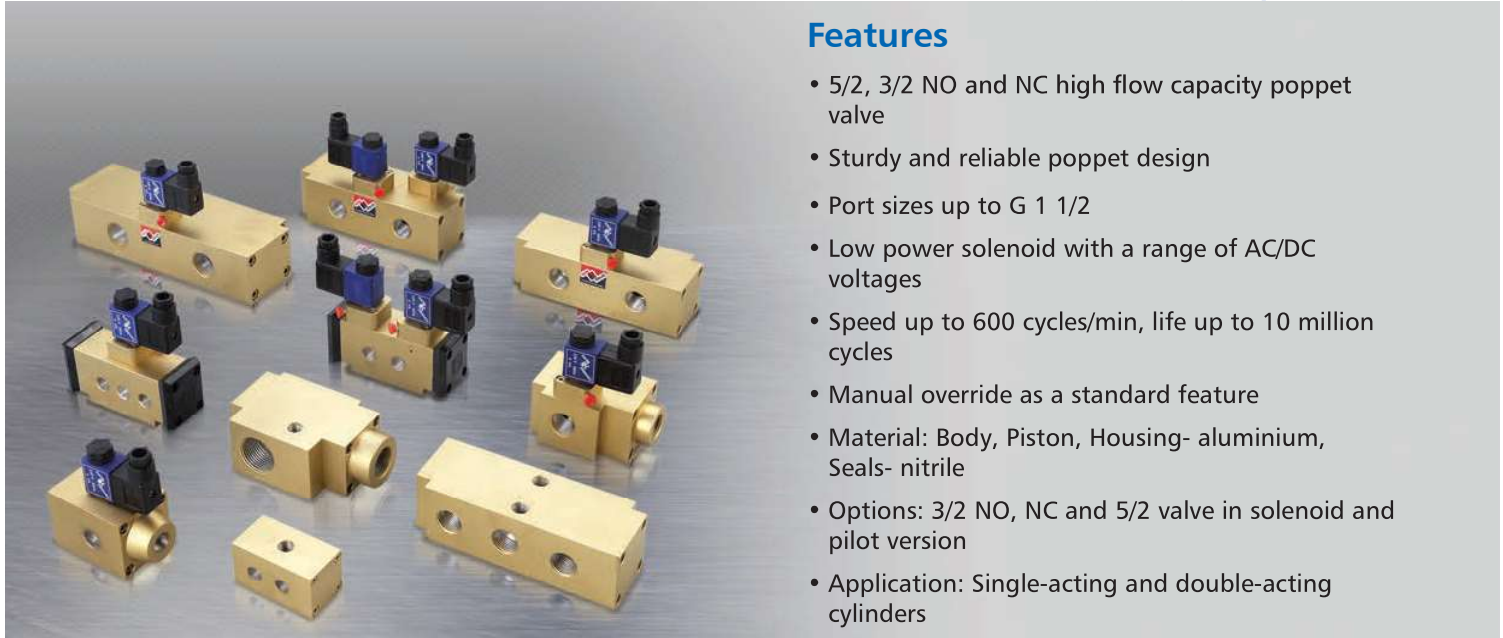




Pneumatic Valves, 3-and 4-way, 2-position (Solenoid / pilot operated)

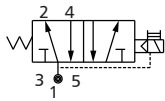


Features

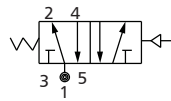
- 5/2, 3/2 NO and NC high flow capacity poppet valve
- Sturdy and reliable poppet design
- Port sizes up to G 1 1/2
- Low power solenoid with a range of AC/DC voltages
- Speed up to 600 cycles/min, life up to 10 million cycles
- Manual override as a standard feature
- Material: Body, Piston, Housing- aluminium, Seals- nitrile
- Options: 3/2 NO, NC and 5/2 valve in solenoid and pilot version
- Application: Single-acting and double-acting cylinders

Available types

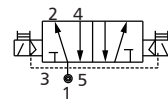
5/2 Single Solenoid



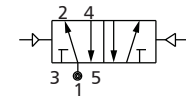
5/2 Single Pilot



5/2 Double Solenoid



5/2 Double Pilot



(1-Inlet, 2,4- Outlet, 3,5- Exhaust)

Specifications

3-way (3/2)

Port Size	Orifice	Pressure	Flow	Material	Weight	Part Code (solenoid opt.)	
BSP	dia	psi	lpm		kg	Normally closed	Normally open
G 1/4	1/4"	25 – 125	1000	Al	0.3	PVS3014GPPAINC1	PVS3014GPPAINO1
G 3/8	3/8"	25 – 125	2000	Al	0.7	PVS3038GPPAINC1	PVS3038GPPAINO1
G 1/2	1/2"	25 – 125	2400	Al	0.7	PVS3012GPPAINC1	PVS3012GPPAINO1
G 3/4	3/4"	25 – 125	5500	Al	1	PVS3034GPPAINC1	PVS3034GPPAINO1
G 1	1"	25 – 125	7000	Al	1.8	PVS3100GPPAINC1	PVS3100GPPAINO1
G 1 1/4	1 1/4"	25 – 125	10000	Al	2	PVS3114GPPAENC1	PVS3114GPPAENO1
G 1 1/2	1 1/2"	25 – 125	16000	Al	4.4	PVS3112GPPAENC1	PVS3112GPPAENO1

4-way (5/2)

BSP	dia	psi	lpm	Material	SS	DS	Single solenoid	Double solenoid
* G 1/4	3/16"	25 – 125	700	Al	0.5	0.6	PVS4014G2SA---1	PVS4014G2DA---1
G 3/8	3/8"	25 – 125	2000	Al	1.3	1.3	PVS4038G2SA---1	PVS4038G2DA---1
G 1/2	1/2"	25 – 125	2400	Al	1.2	1.3	PVS4012G2SA---1	PVS4012G2DA---1
G 3/4	3/4"	25 – 125	5500	Al	2.1	2.2	PVS4034G2SA---1	PVS4034G2DA---1
G 1	1"	25 – 125	7000	Al	3.2	3.2	PVS4100G2SA---1	PVS4100G2DA---1
G 1 1/4	1 1/4"	25 – 125	10000	Al	3.8	3.8	PVS4114G2SA---1	PVS4114G2DA---1
G 1 1/2	1 1/2"	25 – 125	16000	Al	4.3	4.4	PVS4112G2SA---1	PVS4112G2DA---1

* G 1/4-5/2 valve is spool type design; SS= single solenoid; DS= double solenoid

• Pilot pressure \geq Inlet pressure • For pilot-operated valve, put 'P' instead of 'S' in Part Code • For complete details, refer Product Data Sheet.