

# Counter Balance Pneumatic Cylinder ( Big Port )



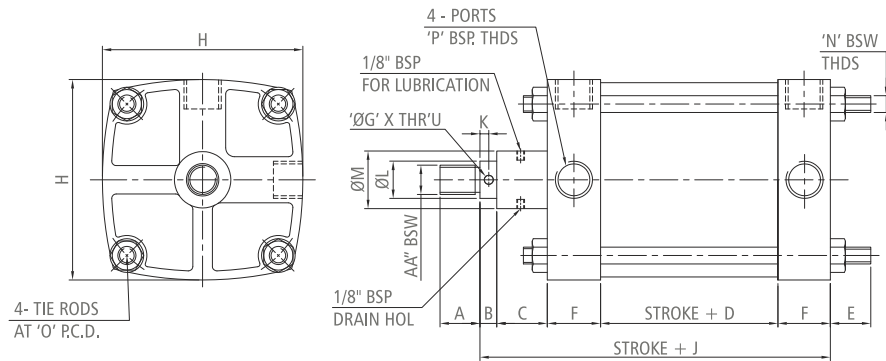
Forming Tomorrow. Today!



## Features

- 6 types of mounting are available.
- Non cushion as a standard feature.
- Cast iron heavy-duty end covers oxidised for rust prevention.
- Seamless cold drawn M.S. honed and hard chrome plated internally to gives long life for piston seal.
- Piston rod is ground, micro-finished and hard chrome plated for lasting seal life and anti-corrosion.
- Synthetic rubber seals with an extra long and rigid inner lip provides an anti twist grip on the piston.
- Construction:- Tube - Mild steel seamless tube with ID honed and hard chrome plated,  
Piston rod - EN-8 hard chrome plated.

## Basic Cylinder



CYL. BORE	AA THDS.	A	B	C	D	E	F	G	H	J	K	L h8	M	N THDS	O	P
40	M12x1.75P	19	13	35	45.1	25	22	6.5	50.5	133.5	7.5	19.3	38	M6x1P	54	1/4"
50	M12x1.75P	19	15	40	54	25	22	6.5	63.5	153	7.5	19.3	43	M6x1P	68	1/4"
65	M12x1.75P	19	15	40	57	25	22	6.5	77.5	156	7.5	19.3	43	M6x1P	83	1/4"
75	M20x2.5P	50	15	45	61	30	36	8.2	92	193	8.5	25.6	47	M10x1.5P	99	1/2"
100	M24x3P	60	15	45	61	30	40	8.2	119	201	8.5	25.6	48	M10x1.5P	125	3/4"
125	M30x3.5P	70	19	50	86	40	55	10.2	146	265	10	35.1	60	M12x1.75P	152.5	1"
150	M30x3.5P	70	19	50	79	40	55	10.2	170	258	10	35.1	60	M12x1.75P	179	1"
200	M36x4P	80	19	55	86	45	70	10.2	225	300	10	38.1	65	M20x2.5P	241.5	1 1/2"
250	M36x4P	80	19	55	95	45	85	12.2	278	339	11.5	44.5	76	M20x2.5P	294	2"
300	M36x4P	80	21	55	95	50	85	12.2	330	341	13	50.8	86	M24x3P	351	2"
350	M45x4.5P	80	24	55	130	55	85	16.2	390	379	14	58.4	105	M24x3P	400	2"

Electropneumatics & Hydraulics (India) Pvt. Ltd.

Gat No. 254/255, Kharabe Wadi, Chakan-Talegaon Road,  
Chakan, Pune 410501, India.

Tel. : +91 2135 667500

Fax. : +91 2135 667502

[www.electropneumatics.com](http://www.electropneumatics.com)

To find out how we can help you,  
email us at [pneumatics@electropneumatics.com](mailto:pneumatics@electropneumatics.com)