



# Pneumatic Valves, dual sensing

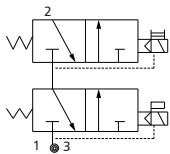
## Features

- Optimum poppet technology for high shift consistency
- High flow and dirt tolerant
- Valves supplied with switch reactor
- Application: Used as safety valve in power presses and for clutch/brake controls



## Available types

3/2 NC Connected Valve



(1- Inlet, 2- Outlet, 3- Exhaust)

## Specifications

Port Size	Orifice	Pressure	Flow	Material	Weight	Part Code
BSP	dia	psi	lpm		kg	
G 1/2	1/2"	30 – 125	2400	Al	1.5	PVS3012GDSAINC1
G 3/4	3/4"	30 – 125	5500	Al	3.9	PVS3034GDSAINC1
G 1	1"	30 – 125	7000	Al	4	PVS3100GDSAINC1
G 1 1/2	1 1/2"	30 – 125	16000	Al	9	PVS3112GDSAINC1

• For complete details, refer Product Data Sheet.