

EPCN Series Hydraulic Cylinder



Forming Tomorrow. Today!

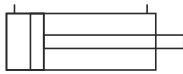


Features

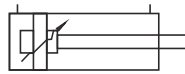
- Cylinders with M.S. end cover and round profile M.S. hone tube.
- Designed suit to die casting.
- PTFE seals and bearing strips ensure perfect sealing and smooth movement.
- Non cushion as a standard feature, cushion (optional)
- Stroke length offered up to 500 mm.
- Working pressure up to 140 bar.
- Viton seal as a standard feature.
- Piston rod is available with thread & coupler type version.
- Front and rear flange mounting are available.
- Construction : Tube - Mild steel seamless tube with ID honed and hard chrome plated.
- Piston rod - EN-8 hard chrome plated.

Available Types

Non Cushion



Cushion



Specifications

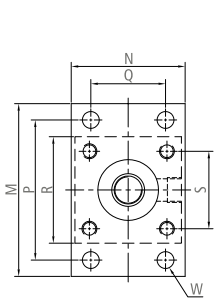
Bore	40, 50, 63, 70, 80, 90, 100, 110, 125, 140, 150, 160, 180mm
Medium	Mineral Oil / Water-Glycol fluid
Design	Piston cylinder cushion / non-cushion version
Pressure range	Up to 140 Bar
Temperature range	Up to 150°C with viton seals
Material	End covers : M.S. ; Piston rod : En-8 hard chrome plated, Piston : M.S. Cylinder tube : M.S. seamless honed ; Mountings : M.S. ; Seals : PTFE, VITON

Ordering code example

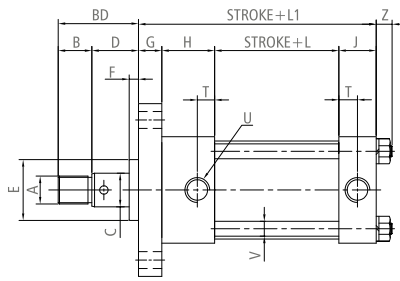
FHC	N	A	A	4	080	E	070	S	X	P	
N Series	Pressure	A 140 Bar	Mountings	A Front flange rectangular B Rear flange rectangular	Cushion	Bore Size	Ram Size	Stroke	Type 1	Type 2	Type 3
					1 Front	40 50	A 18 G 45		S Male thread	X PTFE+Viton seal	P BSP thread
					2 Rear	63 70	B 22 H 50		N Coupler type		T BSPT thread
					3 Both	80 90	C 28 I 56				9 Rod extension
					4 Non	100 110	D 32 J 63				0 Special feature
						125 140	E 36 K 70				
						150 160	F 40 L 80				
						180					

- Custom made hydraulic cylinder can be made on request.

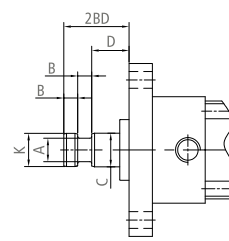
Dimensions



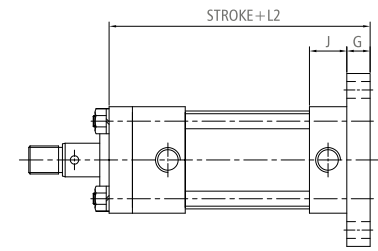
Front/Rear Flange



Thread Type



Coupler Type



Rear Flange

CYL. BORE	ROD Ø C	COUPLER TYPE					THREAD TYPE				E Ø	F	G	H	J	L	L1	L2	M
		A Ø	B	D	2BD	K Ø	A THDS.	B	D	BD									
40	18	13	12.5	30	55	18	M16x1.5P	20	25	45	36	5	18	41	30	68	157	175	118
50	22	16	12.5	35	60	22	M20x1.5P	25	25	50	42	10	20	42	32	68	162	182	135
63	28	20	12.5	35	60	28	M24x1.5P	32	30	62	50	10	20	52	32	77	181	188	160
70	32	22	15	40	70	31.5	M26x1.5P	32	30	62	55	10	20	59	34	81	184	204	170
80	36	25	15	40	70	35.5	M30x1.5P	36	30	66	65	10	25	56.5	40	83	205	228	185
90	40	28	15	45	75	40	M36x1.5P	40	35	75	65	10	25	57	42	90	214	239	190
100	45	31	15	45	75	45	M40x1.5P	45	35	80	70	10	30	58	42	90	220	250	220
110	50	35	20	50	90	50	M45x1.5P	50	35	85	80	10	30	65	42	92	232	257	235
125	56	38	20	50	90	56	M50x1.5P	56	40	96	85	10	32	60	42	102	236	268	255
140	63	43	20	60	100	63	M58x2P	63	40	103	90	10	36	60	45	109	250	286	295
150	70	46	25	60	110	67	M62x2P	67	50	117	105	10	37	64	50	114	265	302	305
160	70	49	25	65	115	70	M65x2P	70	50	120	105	10	41	64	50	114	269	310	335
180	80	55	25	65	115	80	M75x2P	80	55	135	115	10	45	70	56	120	291	336	365

CYL. BORE	N	P	Q	R	S	T	U THDS.	V Ø	W Ø	Z
40	70	94	40	65	45	14	3/8"BSP	10	14	15
50	85	108	50	80	56	15	1/2"BSP	12	14	16
63	100	130	65	90	67	16	1/2"BSP	12	18	16
70	110	138	70	100	74	15	1/2"BSP	12	18	16
80	122	150	80	114	83	18	3/4"BSP	16	18	18
90	128	158	90	120	90	18.5	3/4"BSP	16	18	18
100	145	180	100	136	100	19	3/4"BSP	20	22	22
110	160	196	115	150	110	21	3/4"BSP	20	22	22
125	175	210	125	165	122	21	3/4"BSP	24	26	24
140	195	240	140	185	136	22	3/4"BSP	24	26	30
150	212	254	150	200	150	24	3/4"BSP	27	33	33
160	224	275	160	212	158	24	3/4"BSP	27	33	33
180	250	300	180	236	176	28	3/4"BSP	30	33	37

Electropneumatics & Hydraulics (India) Pvt. Ltd.

Gat No. 254/255, Kharabe Wadi, Chakan-Talegaon Road, Chakan, Pune 410501, India.

Tel. : +91 2135 667500

Fax. : +91 2135 667502

www.electropneumatics.com

To find out how we can help you, email us at pneumatics@electropneumatics.com