



ISO Pneumatic Cylinders (Series M)

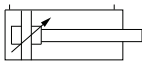


Features

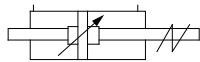
- Cylinders with nylon end covers, nylon piston and 'Mickey Mouse' profile aluminum tube
- Light weight with high strength
- Dimensions as per ISO 6431
- Stroke length offered up to 2500 mm
- Fully adjustable cushioning at both ends
- Options: Bellows, hollow shaft, rod extension and rod threading
- Specials: Reed switch, single-acting, stroke adjustable, double-ended and duplex
- Ideal for use in most demanding automation applications

Available types

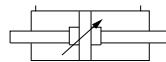
Cushion



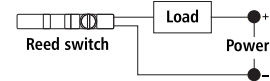
Stroke Adjustable



Double-Ended



Reed Switch Connect Diagram



Specifications

Bore sizes	32, 40, 50, 63, 80, 100, 125 mm
Medium	Compressed air (filtered and lubricated)
Design	Piston cylinder with cushion/non-cushion version
Pressure range	7 to 150 psi (0.5 to 10 bar)
Temperature range	-10 °C to 60 °C
Construction	End covers- nylon, aluminium (optional), Tube- 'Mickey Mouse' profile aluminium semi-hard anodised, Piston rod- EN-8 hard chrome plated, stainless steel (optional), Piston- nylon, aluminium (optional), Mountings- mild steel/cast iron, Seals- NBR

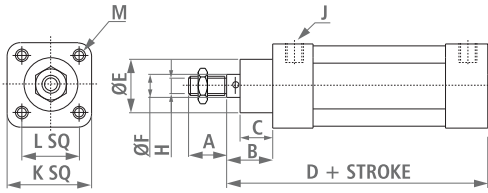
Ordering code

FPC	I	A	A	1	100	G	0250	X	X	X
	ISO	Pressure		1 Cushion 2 Non-cushion		Ram size	Stroke	Type 1	Type 2	Type 3
		A 150 psi				C 12 D 16 F 20 G 25 J 36		X Standard 1 Stroke adjustable 2 Double ended 4 Duplex 5 Single acting	X Std. (metric) 3 Female metric 4 Hollow male 5 Hollow female	X Standard 9 Rod extension 0 Special M Piston with magnet
Mountings				Bore size						
A	Front flange	G	Foot	32	125					
B	Rear flange	I	Stud	40						
C	Rear eye	J	Neck	50						
D	Rear devis	K	Basic	63						
E	Intermediate trunnion			80						
F	Centre trunnion			100						

• Reed switch to be order separately, Part no. EP-39R-25M

Dimensions

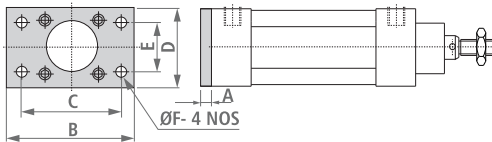
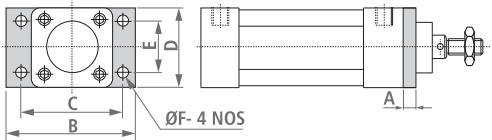
(All dimensions in mm)



Basic

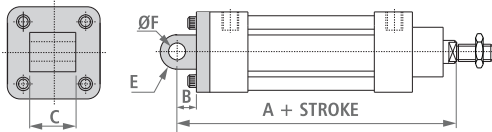
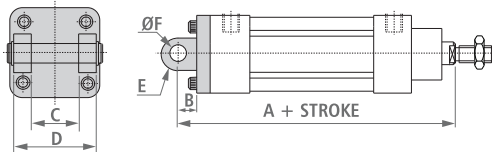
Bore	32	40	50	63	80	100	125
A	22	24	32	32	40	40	54
B	24	29.5	34.5	34.5	42.5	47.5	58
C	18	19.5	19.5	19.5	27.5	32.5	38
*D	122	135.5	145.5	160.5	177.5	192.5	232
E	30	36	43	43	48	48	60
F	12	16	20	20	25	25	36
H	M10X1.25	M12X1.25	M16X1.5	M16X1.5	M20X1.5	M20X1.5	M27X2
J	G 1/8	G 1/4	G 1/4	G 3/8	G 3/8	G 1/2	G 1/2
K	47	55	66	76	97	114	137
L	32.5	38	46.5	56.5	72	89	110
M	M6X1	M6X1	M8X 1.25	M8X 1.25	M10X1.5	M10X1.5	M12X1.75

* Stroke length above 1000 mm offered with stop tube



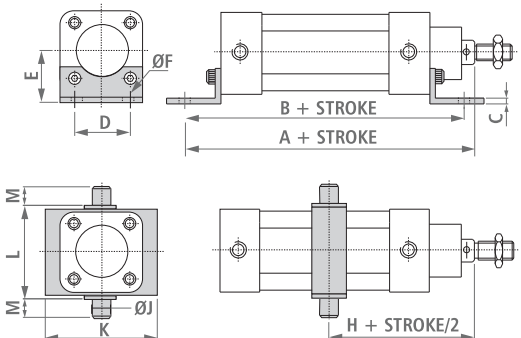
Front and rear flange mounting

Bore	32	40	50	63	80	100	125
A	8	9.5	9.5	9.5	12.5	12.5	13
B	81	95	108	120	152	178	215
C	64	72	90	100	126	150	180
D	47	55	66	76	97	114	137
E	32	36	45	50	63	75	90
F	7	9	9	9	12	14	16



Rear clevis and rear eye mounting

Bore	32	40	50	63	80	100	125
A	142	160	170	190	210	230	275
B	12	15	15	20	20	25	30
C	26	28	32	40	50	60	70
D	45	52	60	70	90	110	130
E	R10	R12	R12	R16	R16	R20	R25
F	10	12	12	16	16	20	25



Foot and centre trunnion mounting

Bore	32	40	50	63	80	100	125
A	144	163	175	190	215	230	270
B	142	161	170	185	210	220	250
C	3	3.5	3.5	5	7	7	7
D	32	36	45	50	63	75	90
E	32	36	45	50	63	71	90
F	7	9	9	9	12	14	16
H	73	82.5	90	97.5	110	120	145
J	12	16	16	20	20	25	25
K	65	75	95	105	130	145	175
L	50	63	75	90	110	132	160
M	12	16	16	20	20	25	25

• For complete details, refer Product Data Sheet.