



# Pneumatic Valves, stackable series

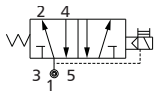


## Features

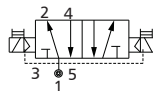
- 5/2, 5/3 Solenoid actuated stackable type poppet valve
- Internal/external pilot operated poppet design
- Streamlined construction for gang manifold
- Compact size with high flow, improves system appearance and performance
- Mounts in any position
- Continuous duty cycle coil
- Material: Body, Piston, Housing- aluminium, Seals- nitrile
- Options: 3/2, 5/2 and 5/3 types in all sizes

## Available types

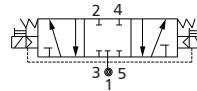
5/2 Single Solenoid



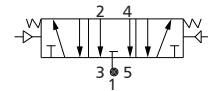
5/2 Double Solenoid



5/3 PHN Solenoid



5/3 PRN Solenoid



(1- Inlet, 2,4- Outlet, 3,5- Exhaust)

## Specifications

### 3-way (3/2)

Port Size	Orifice	Pressure	Flow	Material	Weight	Part Code	
BSP	dia	psi	lpm		kg	Normally closed	Normally open
G 1/8	1/8"	25 – 125	300	Al	0.2	PVSS3018GPPINC1	PVSS3018GPPINO1
G 1/4	1/4"	25 – 125	900	Al	0.4	PVSS3014GPPINC1	PVSS3014GPPINO1
G 3/8	3/8"	25 – 125	2800	Al	1.2	PVSS3038GPPINC1	PVSS3038GPPINO1
G 1/2	1/2"	25 – 125	2800	Al	1.2	PVSS3012GPPINC1	PVSS3012GPPINO1

### 4-way (5/2)

BSP	dia	psi	lpm	Material	SS	DS	Single solenoid	Double solenoid
G 1/8	1/8"	25 – 125	300	Al	0.17	0.2	PVSS4018G2S---1	PVSS4018G2D---1
G 1/4	1/4"	25 – 125	900	Al	0.4	0.5	PVSS4014G2S---1	PVSS4014G2D---1
G 3/8	3/8"	25 – 125	2800	Al	1.7	1.8	PVSS4038G2S---1	PVSS4038G2D---1
G 1/2	1/2"	25 – 125	2800	Al	1.7	1.8	PVSS4012G2S---1	PVSS4012G2D---1

SS= single solenoid, DS= double solenoid

### 4-way (5/3)

BSP	dia	psi	lpm	Material	kg	PHN	PRN
G 1/8	1/8"	25 – 125	300	Al	0.2	PVSS4018G3DPHN1	PVSS4018G3DPRN1
G 1/4	1/4"	25 – 125	900	Al	0.5	PVSS4014G3DPHN1	PVSS4014G3DPRN1
G 3/8	3/8"	25 – 125	2800	Al	1.8	PVSS4038G3DPHN1	PVSS4038G3DPRN1
G 1/2	1/2"	25 – 125	2800	Al	1.8	PVSS4012G3DPHN1	PVSS4012G3DPRN1

• For complete details, refer Product Data Sheet.